



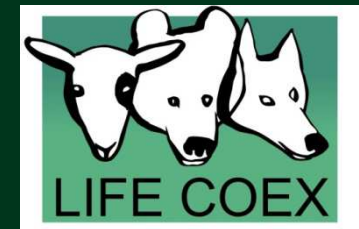
The conference in the frame of the **LIFE EX-TRA** project *by Annette Mertens*





Project background

LIFE COEX “Improving coexistence between large carnivores and agriculture in South Europe” LIFE04NAT/IT/000144
2004-2008



LIFE EX-TRA Project “Improving the conditions for large carnivore conservation: a transfer of best practices” LIFE07NAT/IT/00502
2009-1013





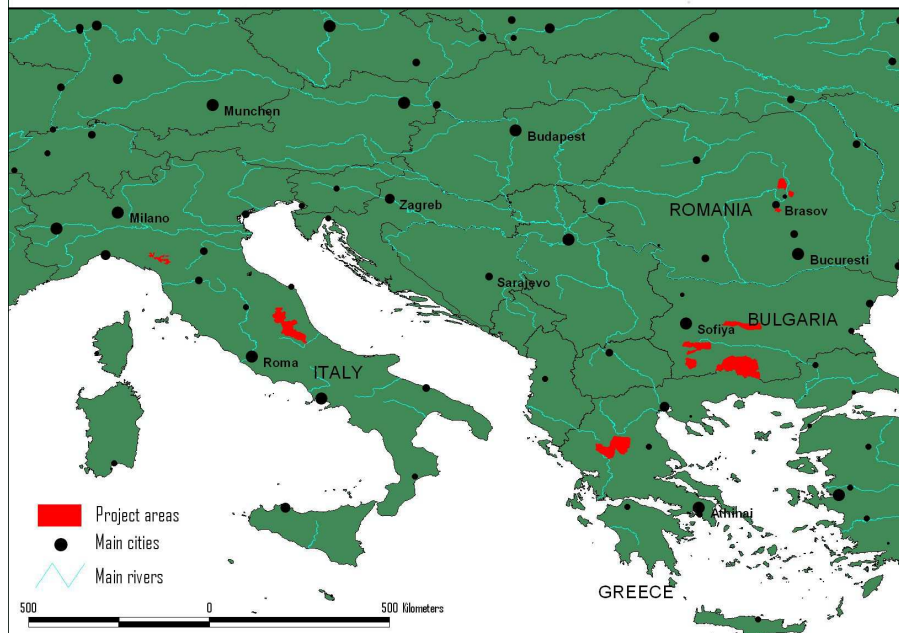
Project background

LIFE COEX

5 countries: Portugal, Spain, France, Italy, Croazia

LIFE EX-TRA

4 countries: Italy, Romania, Bulgaria, Greece





Common problem

High human densities

Small scale
livestock raising/
subsistence

Scarce use of
preventive measures

Livestock
raisers used to
state support

Overlap of large
carnivores presence
and human activities

Difficult working
conditions

Low social
tolerance
towards LC's

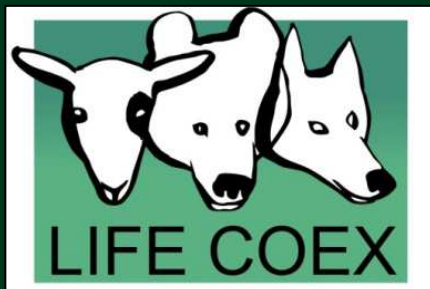
Problems of
compensation
systems

CONFLICT!



Main objective

Main used tools



- Demonstration and dissemination of the use of damage prevention techniques

- Distribution of e-fences and LGD
- Promoting other protection techniques



- Improving conditions by raising capacities and gaining the support of local communities

- Training of management staff about damage analysis and prevention
- Damage monitoring protocols
- BETs
- Stakeholder participation



EX-TRA actions

Monitoring of wolves, bears and conflicts

Encourage use of damage prevention tools
(LGD and e-fences)

Training and transfer of best practices

Bear emergency teams

Red deer restocking

Involvement of local communities





Wolf and bear monitoring



Video
Gino Damiani – Simone Ricci



Monitoring LC populations - Bulgaria



Photo: D. Zlatanova



Monitoring LC populations - Romania



Photo: I. Dutca

7°C



06/25/10 05:39 AM

LIFEXTRA06



Damage monitoring



Photo: U. Di Nicola

Environmental analysis

Caracass examination



Photo: U. Di Nicola





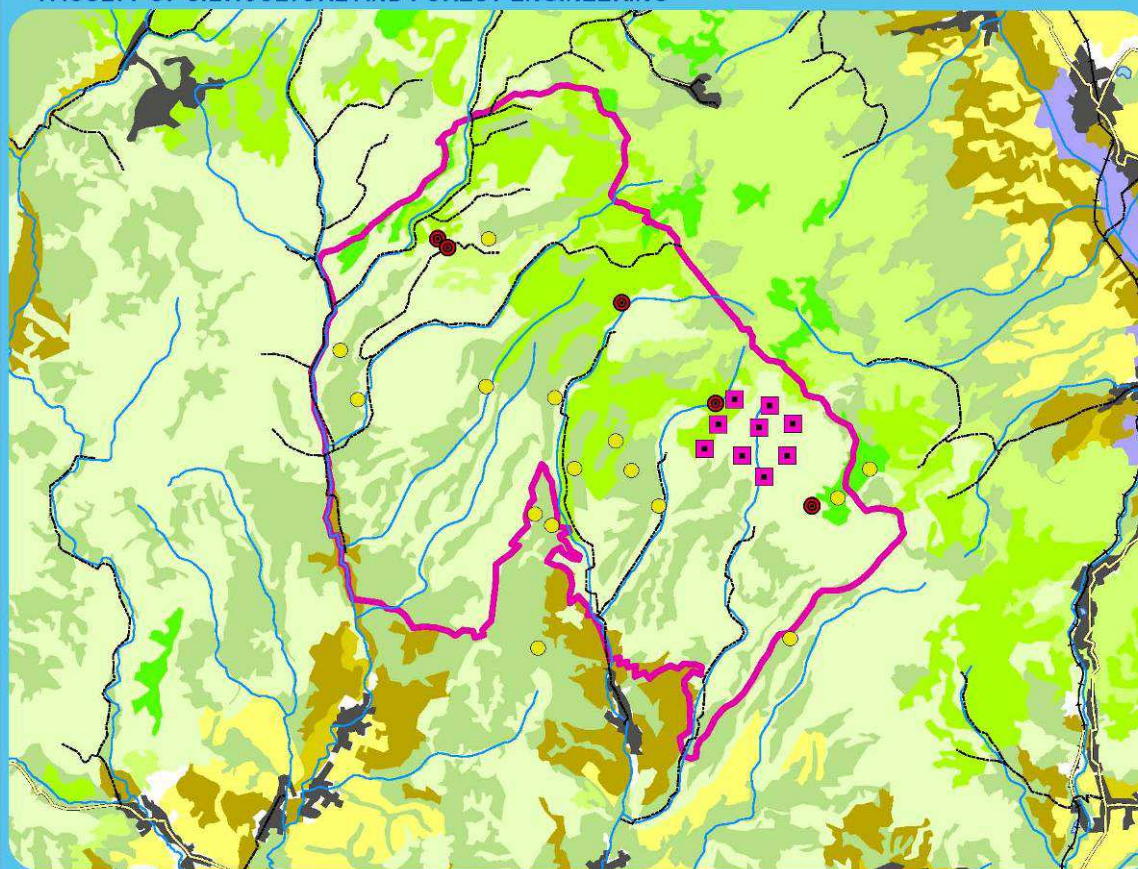
Data mapping



LIFE07/NAT/IT/000502 - Improving the conditions for large carnivore conservation - a transfer of best practices

TRANSILVANIA UNIVERSITY OF BRASOV
FACULTY OF SILVICULTURE AND FOREST ENGINEERING

Herculian - Carnivores



Legenda

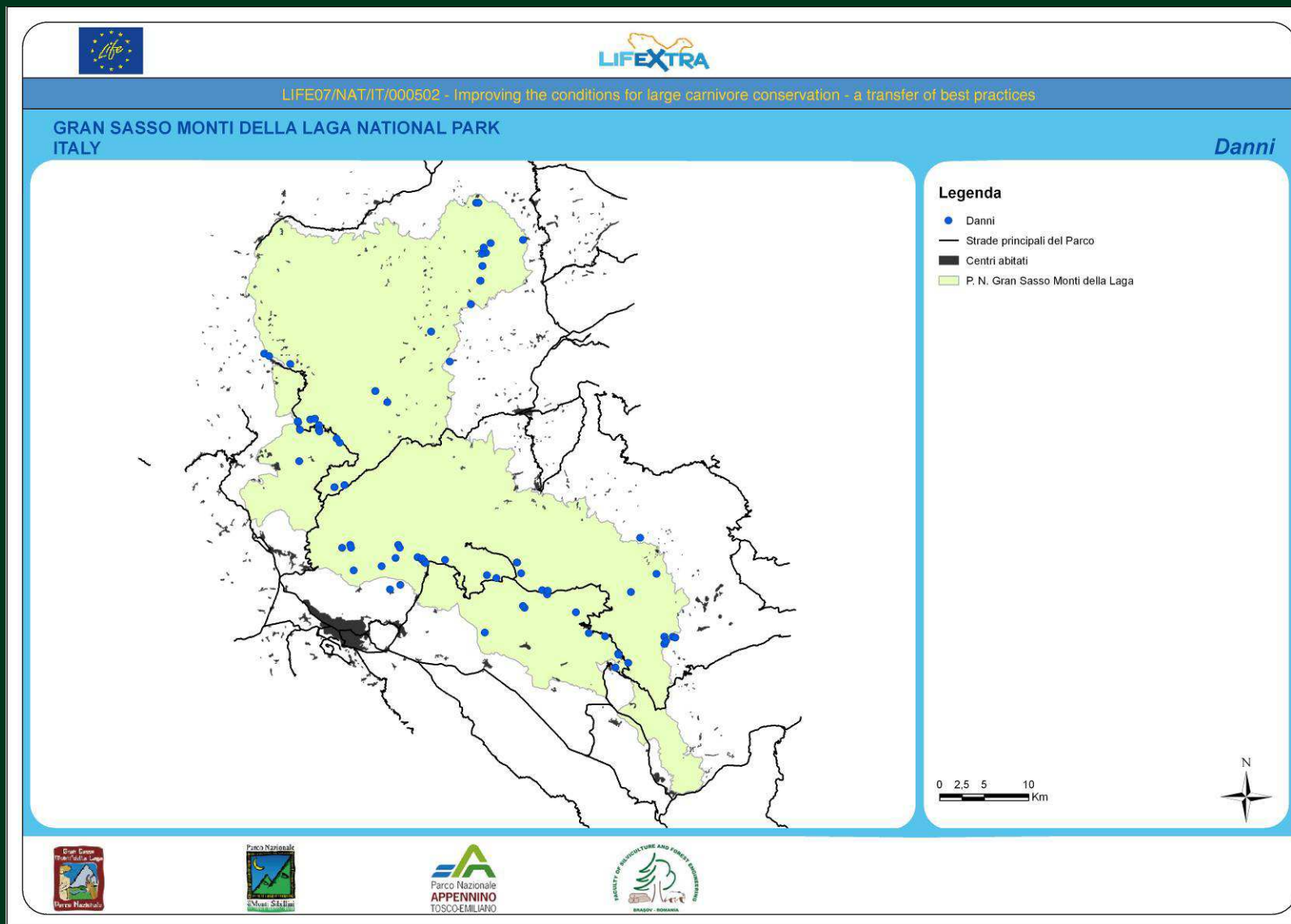
- Bear observation points
- Wolves rendezvous sites
- Allevamenti
- Strade comunali
- Strade nazionali
- Ferrovie
- Centri urbani
- Aree protette
- Corine Land Cover**
- Seminativi in aree non irrigue
- Seminativi in aree irrigue
- Prati stabili (foraggiere permanenti)
- Sistemi colturali e particellari complessi
- Aree agrarie con presenza di spazi naturali importanti
- Boschi di latifoglie
- Boschi di conifere
- Boschi misti
- Aree a pascolo naturale e praterie d'alta quota
- Brughiere e cespuglieti
- Area a veg. boschiva e arbustiva in evoluzione
- Spiagge, dune e sabbie
- Aree con vegetazione rada
- Paludi interne

0 1.500 3.000 6.000
m





Data mapping





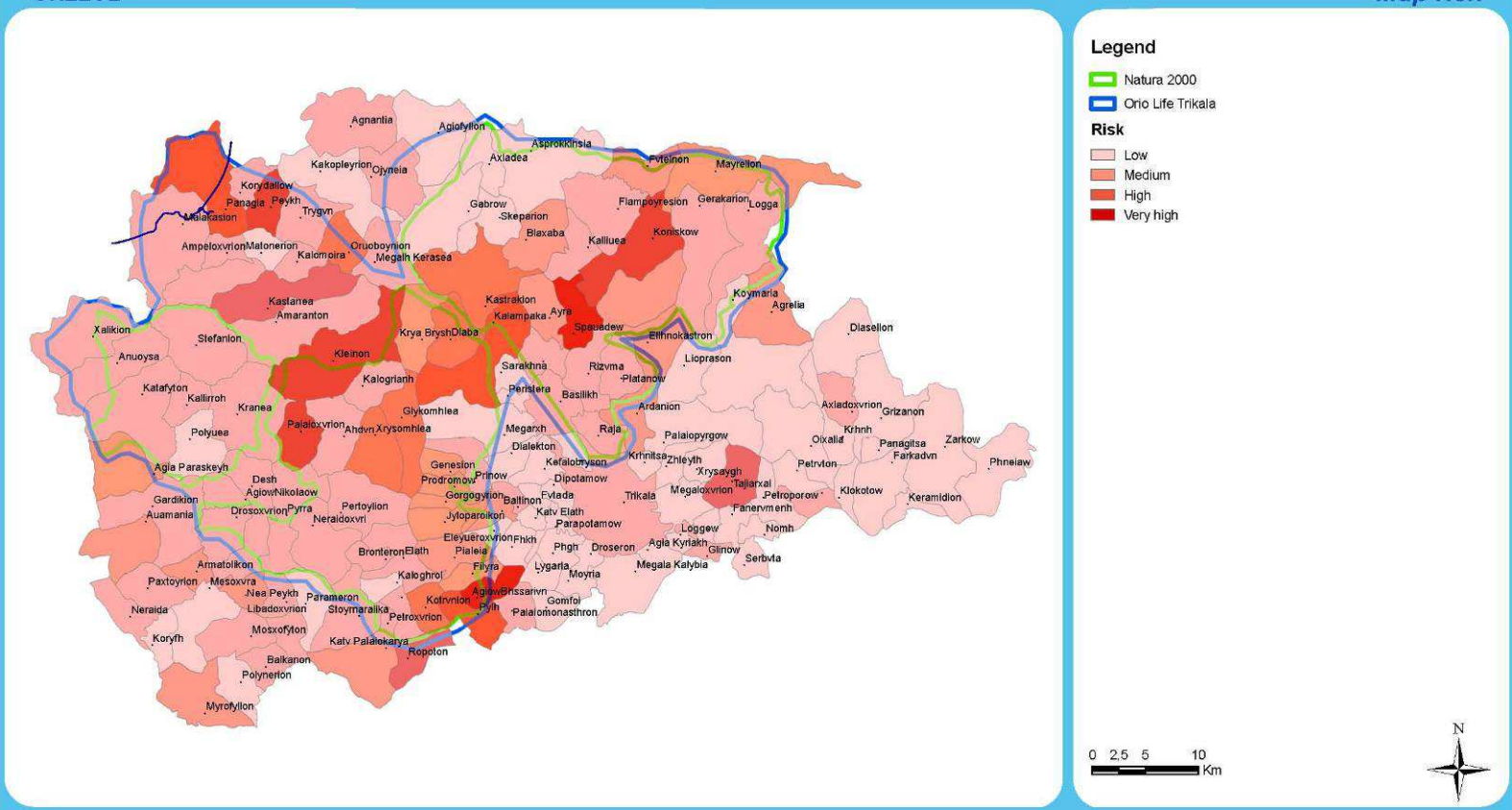
Data mapping



LIFE07/NAT/IT/000502 - Improving the conditions for large carnivore conservation - a transfer of best practices

CALLISTO - WILDLIFE AND NATURE CONSERVATION SOCIETY
GREECE

Map risk





Encouraging damage prevention



Photo: Parco Nazionale Monti Sibillini



Encouraging damage prevention



Photo: I Dutca



Encouraging damage prevention



Photo: F. Barbarossa



Encouraging damage prevention



Photo: G. Predoiu



Encouraging damage prevention



Photo: I. Dutca



Encouraging damage prevention





Encouraging damage prevention



Photos: U. Di Nicola





Training activities



Photo: U. Di Nicola



Training activities





Training activities



Photo: D. Zlatanova



Training activities



Photo: D. Zlatanova



Wolf/bear emergency teams



Photo: W. Reggioni



Wolf/bear emergency teams



Photo: D. Zlatanova



Ungulate conservation



Photo: N. Riganelli



Involvement of local communities





Involvement of local communities



Photo: A. Dutsov



Involvement of local communities





Involvement of local communities - results

General recognition by stakeholders of an ongoing process

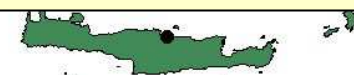
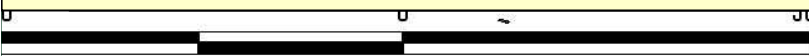


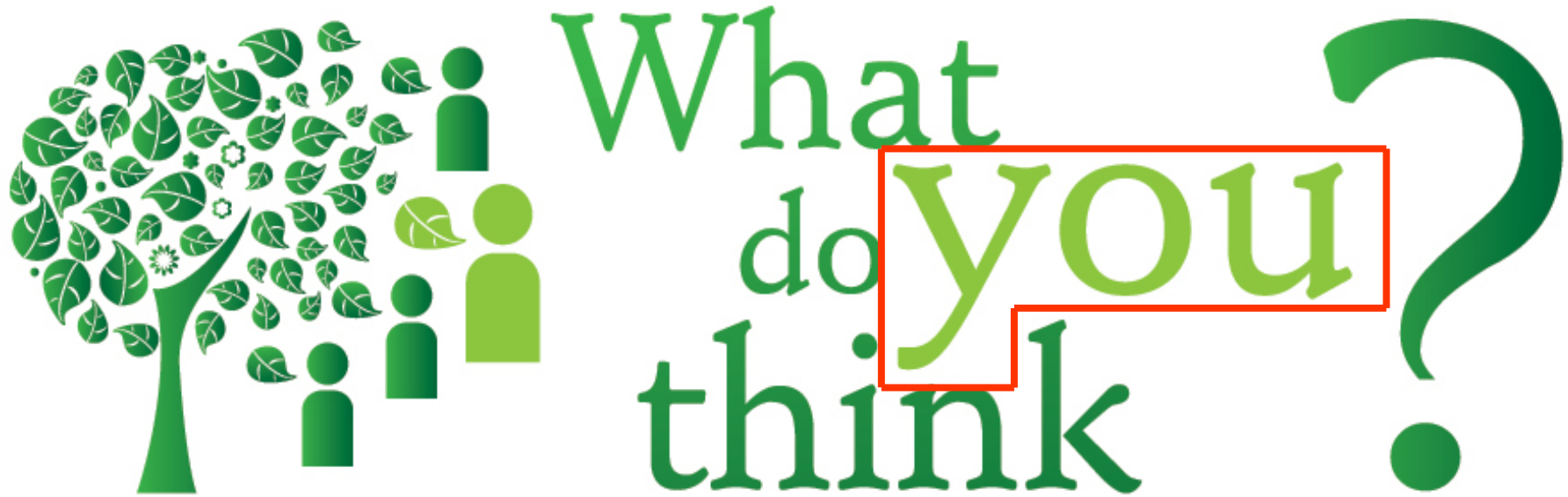
General improvement of relationships between stakeholders and authorities



Recognition of local/national authorities of the importance and effectiveness of the applied tools

500 Meters





ENGAGING LOCAL COMMUNITIES
IN NATURE CONSERVATION
DEVELOPING A TOOLBOX

10·11·12·13 OCTOBER 2012 / FONTE CERRETO - L'AQUILA - ITALY



THANK YOU!

